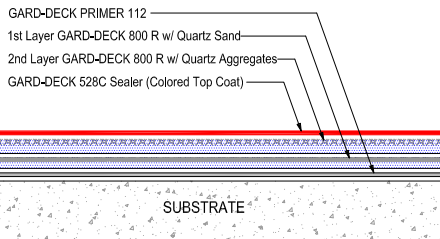
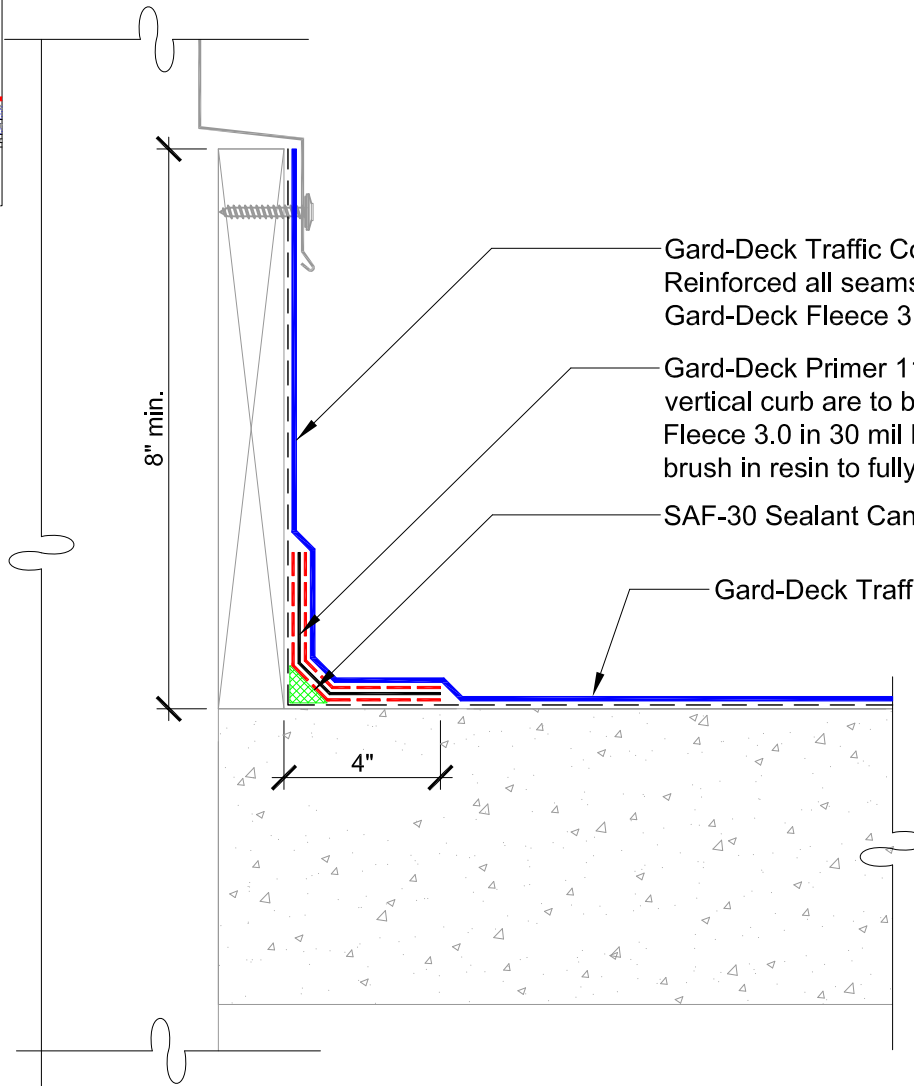
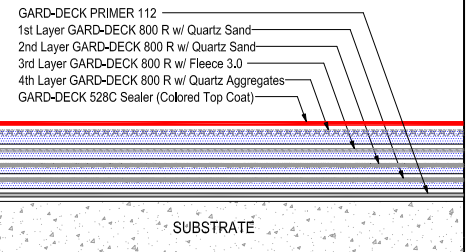


**GARD-DECK TRAFFIC COATING SYSTEM (Unreinforced)**



**GARD-DECK TRAFFIC COATING SYSTEM (Reinforced)**



Gard-Deck Traffic Coating  
Reinforced all seams in wood curb with  
Gard-Deck Fleece 3.0 and Gard-deck 800 R.

Gard-Deck Primer 112 all surfaces of concrete and  
vertical curb are to be primed. Install Gard-Deck  
Fleece 3.0 in 30 mil bedding of Gard-Deck 800 R,  
brush in resin to fully wet Fleece.

SAF-30 Sealant Cant / Fillet at inside corners

Gard-Deck Traffic Coating System



DETAIL NAME:

**WOOD CURB**

JOB NAME:

Scale:

NTS

Date:

04-17-17

Drawing #:

GD-011